

# Cambridge Biomedical Campus

Lindapter Girder Clamps provided a solution for securing secondary steel to support heavy duty pipes.



## Project Background

**Location:** Cambridge, UK

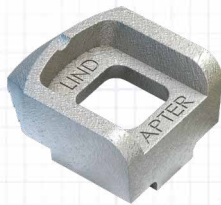
**Product:** Type A Girder Clamps

**Market:** Building Services

**Client:** AstraZeneca

**Main Contractor:** Skanska Mace JV

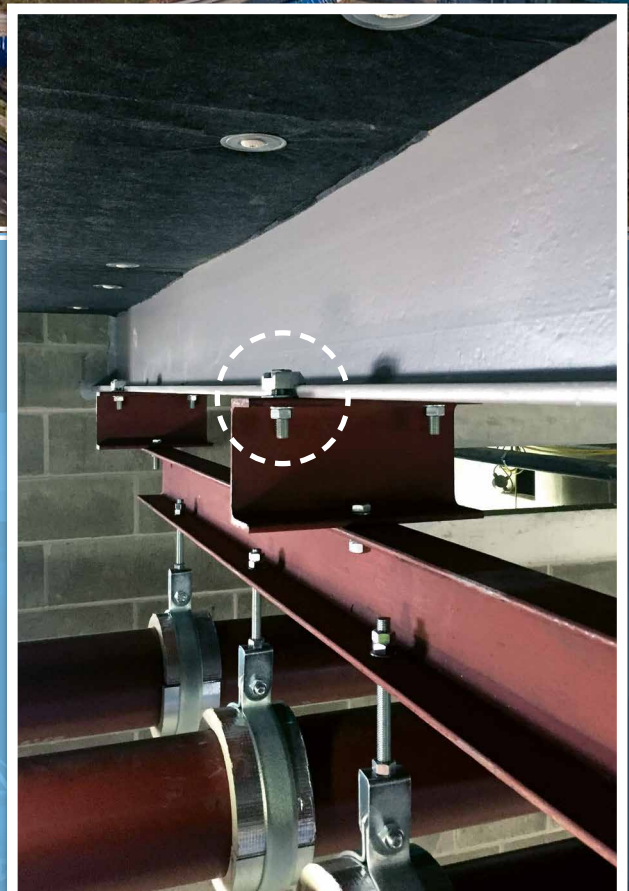
**M&E Contractor:** Fasel Group



AstraZeneca is a multinational pharmaceutical and biopharmaceutical company with headquarters at Cambridge Biomedical Campus. The huge campus which is home to Addenbrooke's hospital as well as many other research and development companies, has seen massive expansion over the last decade.

## Client Requirement

The latest new building to be constructed on the campus required a safe and secure method of connecting secondary steel to the main structural frame. This secondary steel would be at high level and support heavy-duty mechanical pipework and building services pipes around the building. Engineers also required the supports to be adjustable to allow for onsite tolerances.



*Girder clamps connect secondary steel to the main beam*



# Cambridge Biomedical Campus

## Design Solution

Lindapter worked with David Smith Associates in Northampton to design a simple but effective connection detail using Lindapter Type A Girder Clamps. Small sections of Parallel Flange Channels connected to the main structural beams using Type As in a two-bolt configuration. This provided the necessary tensile strength to support further secondary steel below and the pipes.

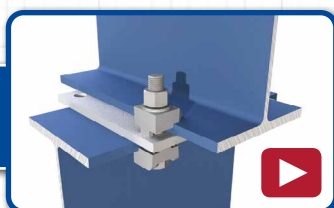


## Installation

Installation was quick and easy as each bolt was simply inserted into predrilled holes in the steel channel sections with the Type A on one end and nut on the other. The adjustability of the girder clamps allowed the contractor to align the steel channel sections into the exact positions required.

To complete the installation, the recessed top of the clamp held the bolt captive while the nut was tightened with standard hand tools, quickly achieving a safe and secure connection.

[Click here](#) to watch the installation video >>>



## Result

The Type A provided fast installation and avoided costly onsite drilling or welding. The adjustability of the girder clamps also gave the contractor flexibility to overcome any onsite alignment issues.

The girder clamps have independent technical accreditations, including the CE mark (ETA-13/0300), TÜV and Lloyd's Register approvals. These accreditations verify the tensile load capacities that led to a safe installation.



AstraZeneca headquarters at Cambridge Biomedical Campus

## Key Benefits

- ✓ No drilling or welding required
- ✓ Fully adjustable onsite for easy installation
- ✓ Hot Dipped Galvanised finish offers a cost effective and low maintenance solution
- ✓ CE Mark (ETA-13/0300), TÜV and Lloyd's Register approvals



[Click here](#) for more details